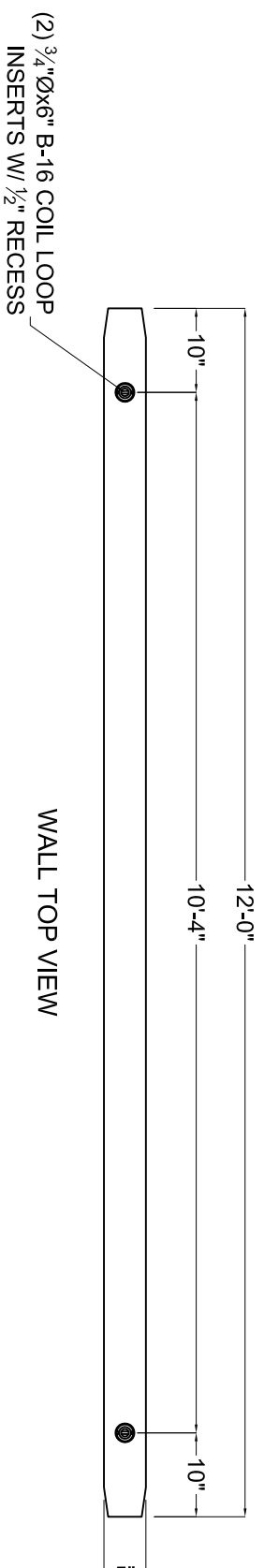
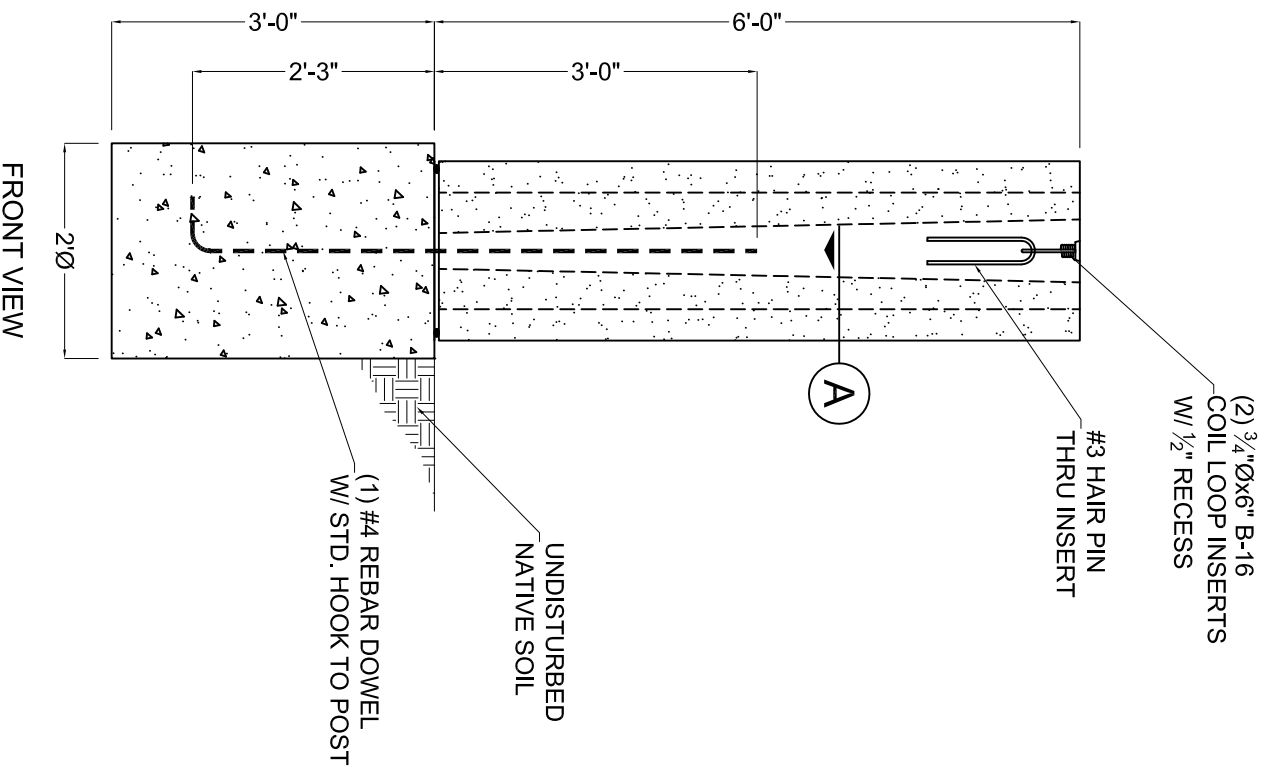


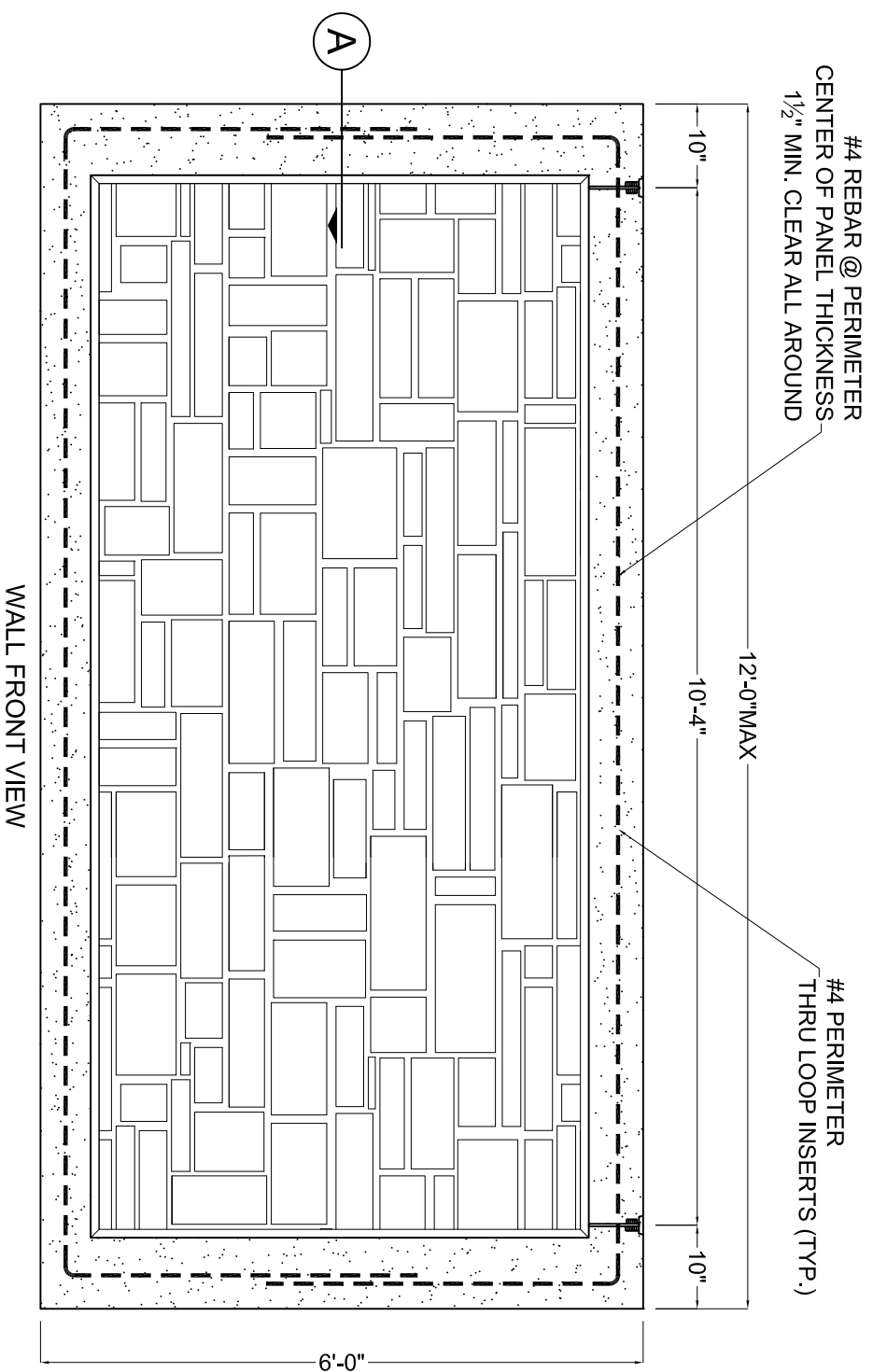
COLUMN
TOP VIEW



WALL TOP VIEW



FRONT VIEW

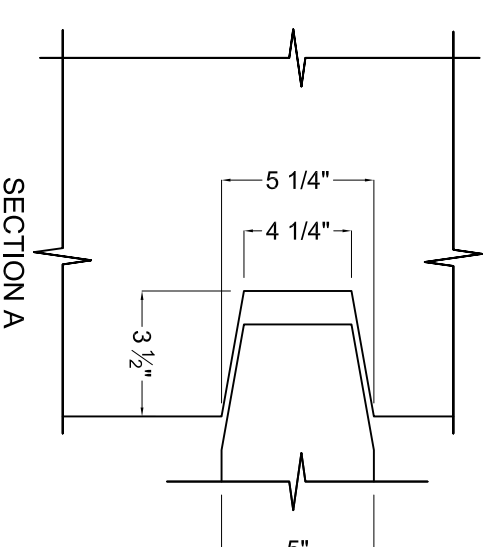


WALL FRONT VIEW

- (2) 3/4"Øx6" B-16 COIL LOOP INSERTS W/ 1/2" RECESS
 #3 HAIR PIN THRU INSERT
 (1) #4 REBAR DOWEL W/ STD. HOOK TO POST
 UNDISTURBED NATIVE SOIL
 #4 REBAR @ PERIMETER CENTER OF PANEL THICKNESS 1 1/2" MIN. CLEAR ALL AROUND
 (2) 3/4"Øx6" B-16 COIL LOOP INSERTS W/ 1/2" RECESS
 #4 PERIMETER THRU LOOP INSERTS (TYP.)
 10"
 10'-4"
 12'-0" MAX
 10'-4"
 10"
 6'-0"
 10"
 10"
 10"
 5"

NOTES:

1. POST AND PANEL CONCRETE TO BE 5000 PSI.
2. FOOTING CONCRETE TO BE 3000 PSI.
3. MINIMUM SOIL LATERAL BEARING ALLOWABLE: 150 PSF/FT. OF DEPTH BELOW GRADE
4. MINIMUM ALLOWABLE SOIL BEARING PRESSURE: 2000 PSF.
5. DIMENSIONS MAY BE REDUCED TO FIT PROJECT REQUIREMENTS.
6. GROUT BETWEEN POST AND FOOTING TO BE 2500 PSI.



SECTION A

TYP. 6' PANEL, PIER & POST

CONCRETE	
$f_c = 5,000$ PSI	$f_{ci} = 2,500$ PSI
SLUMP: 4"-9"	SPU: N/A
FINISH: PATTERN	MIX: TBD
WEIGHT: 150 LBS. PCF.	AIR: 5%
VOLUME: TBD	SHIPPING WT: TBD

\\swellm\soft\groups\Users\jg & B DWG\VERT-crete\vc Logo Registered.jpg

16500 SOUTH 500 WEST
BLUFFDALE, UTAH 84065
PHONE: (801) 571-2028
FAX: (801) 606-7786

SHEET TITLE: CHECKED BY:

SOUND WALL M.S.

DRAWN BY: SHEET #

J.A.

DATE:

2-7-11

VC-4.1