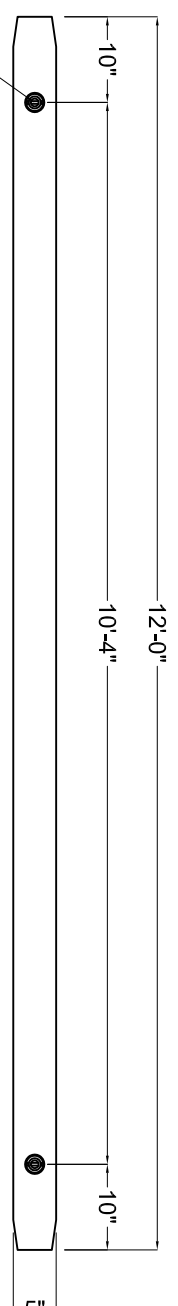
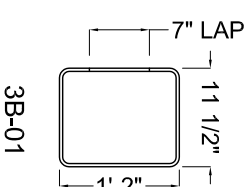
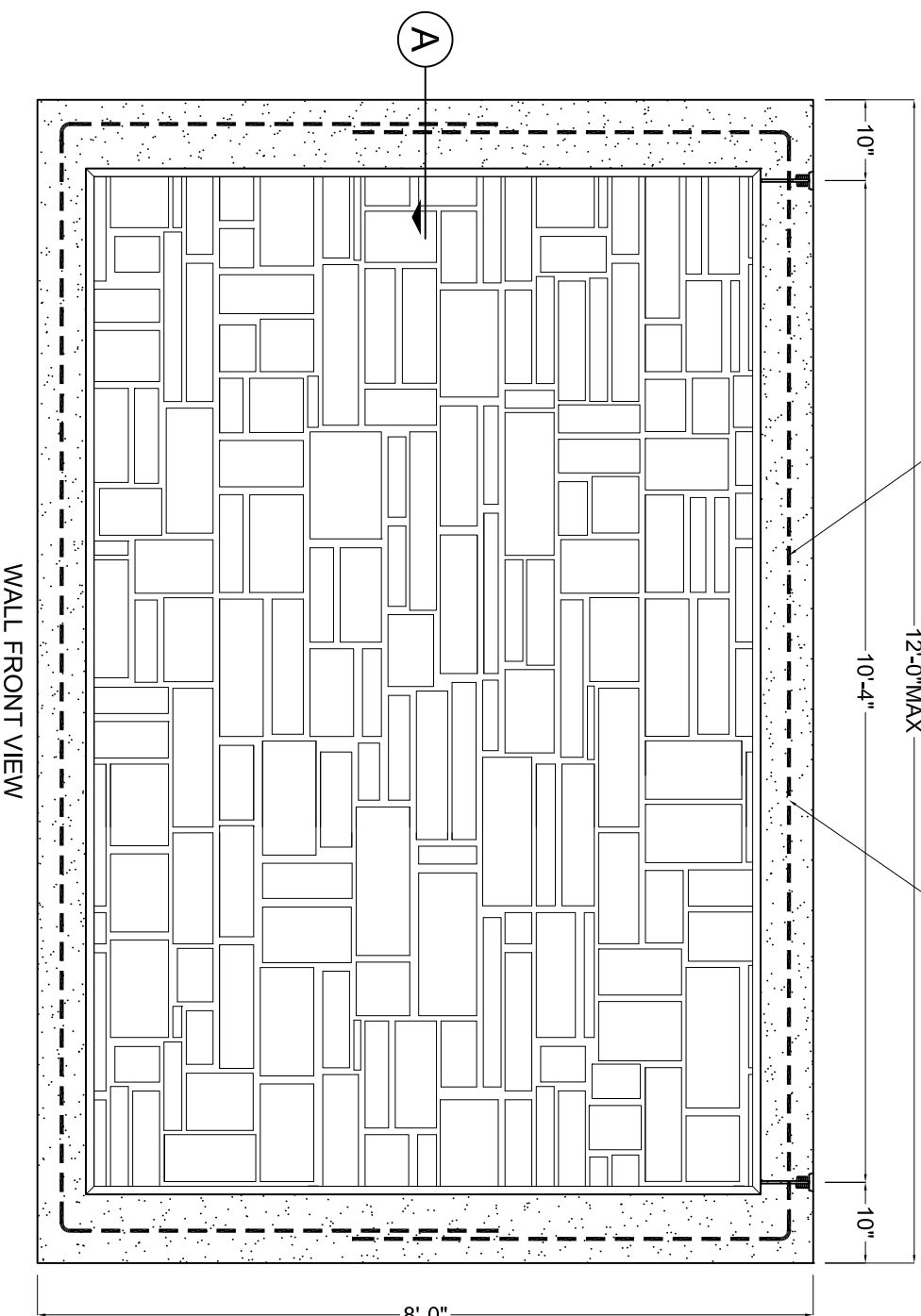
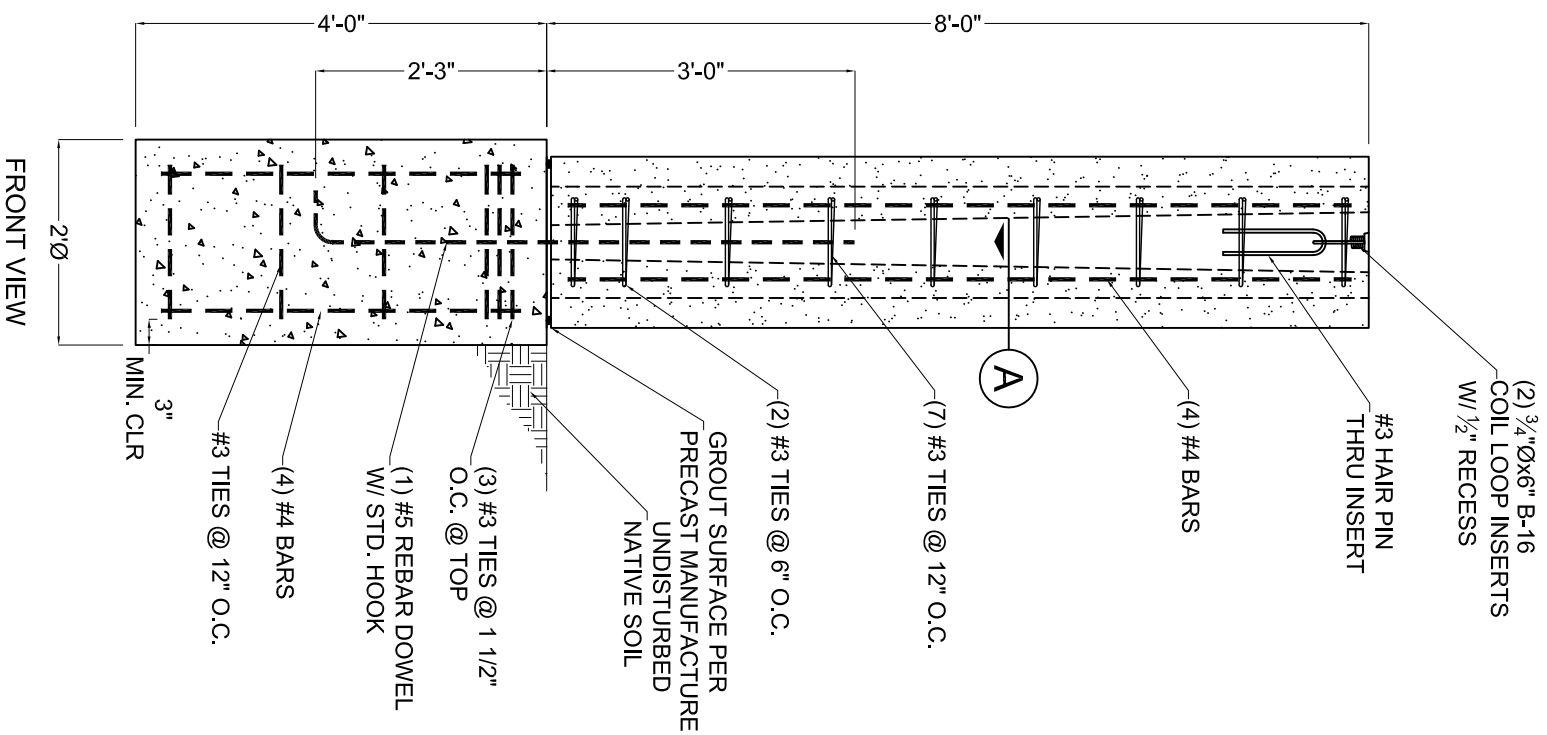


(2) 3/4"Øx6" B-16 COIL LOOP INSERTS W/ 1/2" RECESS

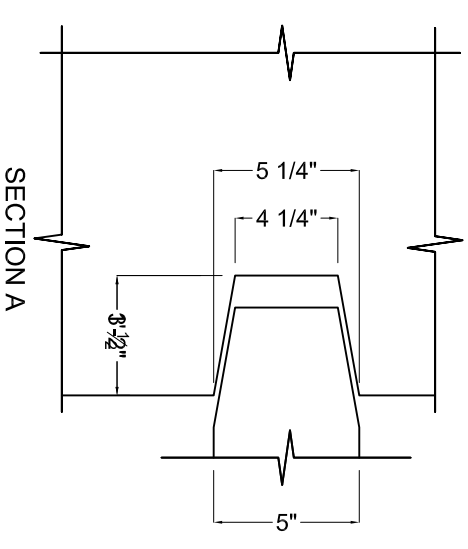


#4 REBAR @ PERIMETER
CENTER OF PANEL THICKNESS
1 1/2" MIN. CLEAR ALL AROUND

#4 PERIMETER
THRU LOOP INSERTS (TYP.)



- NOTES:
1. POST AND PANEL CONCRETE TO BE 5000 PSI.
 2. FOOTING CONCRETE TO BE 3000 PSI.
 3. MINIMUM SOIL LATERAL BEARING ALLOWABLE: 150 PSF/FT. OF DEPTH BELOW GRADE
 4. MINIMUM ALLOWABLE SOIL BEARING PRESSURE: 2000 PSF.
 5. DIMENSIONS MAY BE REDUCED TO FIT PROJECT REQUIREMENTS.
 6. GROUT BETWEEN POST AND FOOTING TO BE 2500 PSI.



TYP. 8' PANEL, PIER & POST

CONCRETE	
$f_c = 5,000$ PSI	$f_{cl} = 2,500$ PSI
SLUMP: 4"-9"	FPU: N/A
FINISH: PATTERN	MIX: TBD
WEIGHT: 150 LBS. PCF.	AIR: 5%
VOLUME: TBD	SHIPPING WT: TBD

\\lowellm\dl\groups\Users\jg & B DWG\VERT-crete\vc Logo Registered.jpg

16500 SOUTH 500 WEST
BLUFFDALE, UTAH 84005
PHONE: (801) 571-2028
FAX: (801) 606-7786

SHEET TITLE: CHECKED BY:

SOUND WALL M.S.

DRAWN BY: SHEET #

J.A.

DATE:

2-7-11

VC-4.2