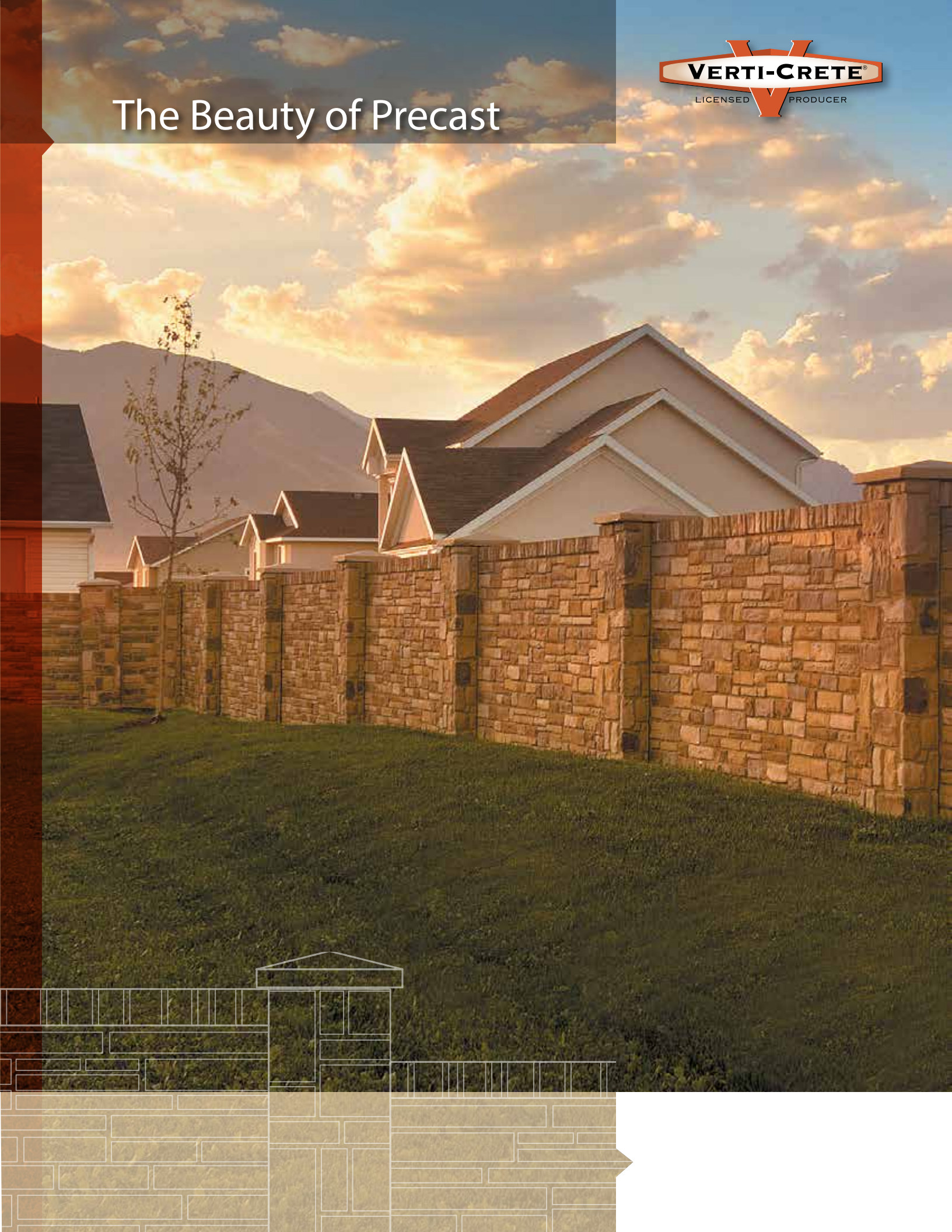


The Beauty of Precast



Privacy Walls Worth Looking At

Beauty in the Look, Price and Delivery

Just beautiful. That's sure to be the sentiment of both neighbors and passers-by who view a new Verti-Crete privacy wall. But the thing that's really beautiful is what you know about that wall's ultimate value and quality. Only a Verti-Crete wall gives the look of real stone at an affordable price—and with an amazingly quick installation.

The Look of True Masonry

The timeless look of stone complements any surrounding—and Verti-Crete has a striking selection of realistic designs to choose from. Verti-Crete's custom molded textures are so realistic you'll see every detail of the natural stone—right down to the grout joints in-between. Our proprietary method of vertically casting panels and columns allows not only for beautiful aesthetics on both sides of the wall, but also seamless stone patterns that wrap around each post corner.

To achieve the final effect of real stone, Verti-Crete walls are colored with a water-based acrylic structural concrete stain designed for superior penetration. The stain is specifically formulated to ensure moisture proofing, color stability, and ultraviolet resistance. After installation, a base color is applied with an airless spray gun. Then, accent colors are applied to individual stones to create the subtle yet realistic look of actual masonry. Virtually limitless combinations of base and accent colors can be applied to match the theme of any project.



TOP: LAVA ROCK
BOTTOM: BRICK

- Privacy Fences
- Sound Walls
- Earth Retaining Walls
- Pillars
- Dumpster Enclosures
- Mailbox Posts

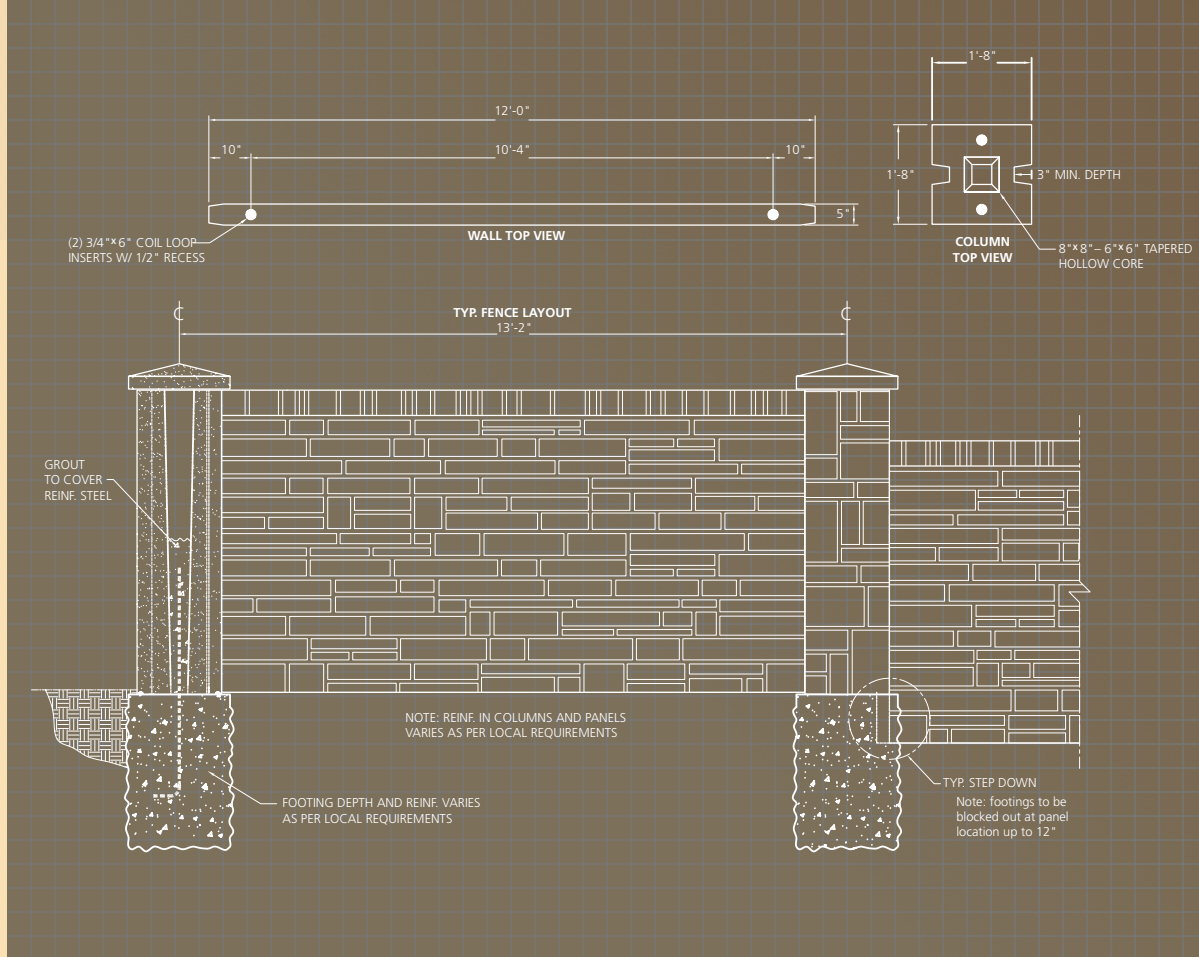
Standard Dimensions

Panels

- 4' x 12' panels
- 6' x 12' panels
- 8' x 12' panels
- 10' x 12' panels

Columns

- 20" x 20" diameter



TOP: DURANGO
BOTTOM: ASHLAR COLUMNS WITH WROUGHT IRON



The Value of Precast

Verti-Crete walls are constructed of precast concrete for unmatched durability and consistent quality. Our proprietary vertical system design outperforms traditional cast methods by dramatically improving product quality and functionality while actually reducing production and installation costs. You'll receive a molded stone pattern on both sides of the wall with the look and feel of real masonry at a fraction of the cost.

Beauty aside, Verti-Crete products are also more durable than wood, vinyl, or even brick or block walls. Our seamless solid-panel design provides structural strength and security that will last for decades. Moreover, Verti-Crete walls can be engineered to meet the building code requirements of any area. From seismic concerns to hurricane wind loads, Verti-Crete walls are designed to endure the harshest conditions and broadest range of climates.



ASHLAR



BRICK



CASTLE STONE



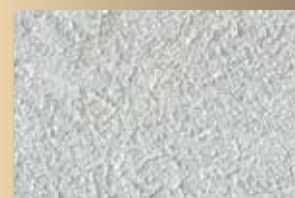
DURANGO



LAVA ROCK



LEDGESTONE



STUCCO



SIERRA DRYFIT





The Ease of Installation

One of the things Verti-Crete customers like most about our walls is what they don't see—specifically, a construction crew and equipment on their property for weeks on end. Our unique design streamlines the installation process and allows for incredible flexibility in configuration. Unlike the hassle of precisely digging, maneuvering, and setting traditional H-posts, Verti-Crete posts are installed over footings with rebar anchors. After the footings are set, Verti-Crete's hollow-core posts are set over the rebar to rest firmly on each concrete base. Panels are then set in place to fit securely within notches cast into the posts. After each section is plumbed and leveled, the columns are filled with concrete to secure the connection between post and footing. This process results in a faster installation and the most cost efficient and secure connection available.



TOP: ASHLAR
BOTTOM: ASHLAR COLUMNS WITH
LEDGE STONE/WROUGHT IRON PANELS

Call us today for a quote or to learn more about how our products can enhance the security and aesthetics of your project.

Verti-Crete, LLC Headquarters

801-571-2028 **phone**

801-576-1595 **fax**

sales@verti-crete.com **email**

www.verti-crete.com **web**

address 16120 S Pony Express Rd
Bluffdale, UT 84065



Contact us for a quote
801-571-2028 / sales@verti-crete.com

16120 S Pony Express Road Bluffdale, UT 84065
www.verti-crete.com