

Pattern: Split Face Block #504

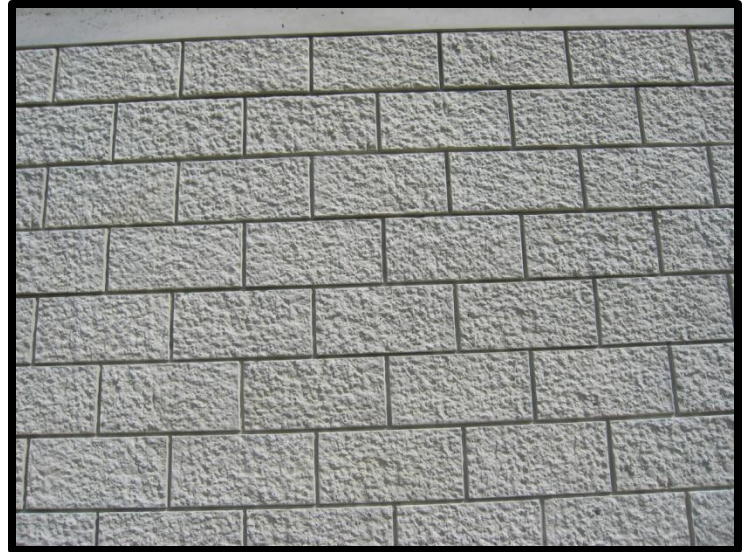


VERTI-CRETE FORMLINERS

Key Features

Split Face Block is the definitive classic architectural block. Its broken rock-face appearance reveals the rough, quarried stone surface that enhances the character of any environment.

Unique in texture, Split Face Block provides versatility with quality and a visually appealing finish for any application. This broken aggregate rock pattern is adaptable in a wide variety of settings and is the epitome of class and taste.



Specifications

Maximum relief:	3/4"
Average relief:	1/2"
Grout Joint Ave Width:	1/2"
Stone Size:	16" w x 7 1/2" h
Liner Thickness (No Backing)	1"
Liner Thickness (Plywood Backed)	1 3/4"
Maximum Part Size	18' 3 1/2" w x 8' h

Verti-Crete, LLC

Mail: PO Box 2347, Sandy, UT 84091

Plant: 16500 S. 500 West, Bluffdale, UT 84065

Ph 801-571-2028 **Fax** 801-606-7786 www.verti-crete.com